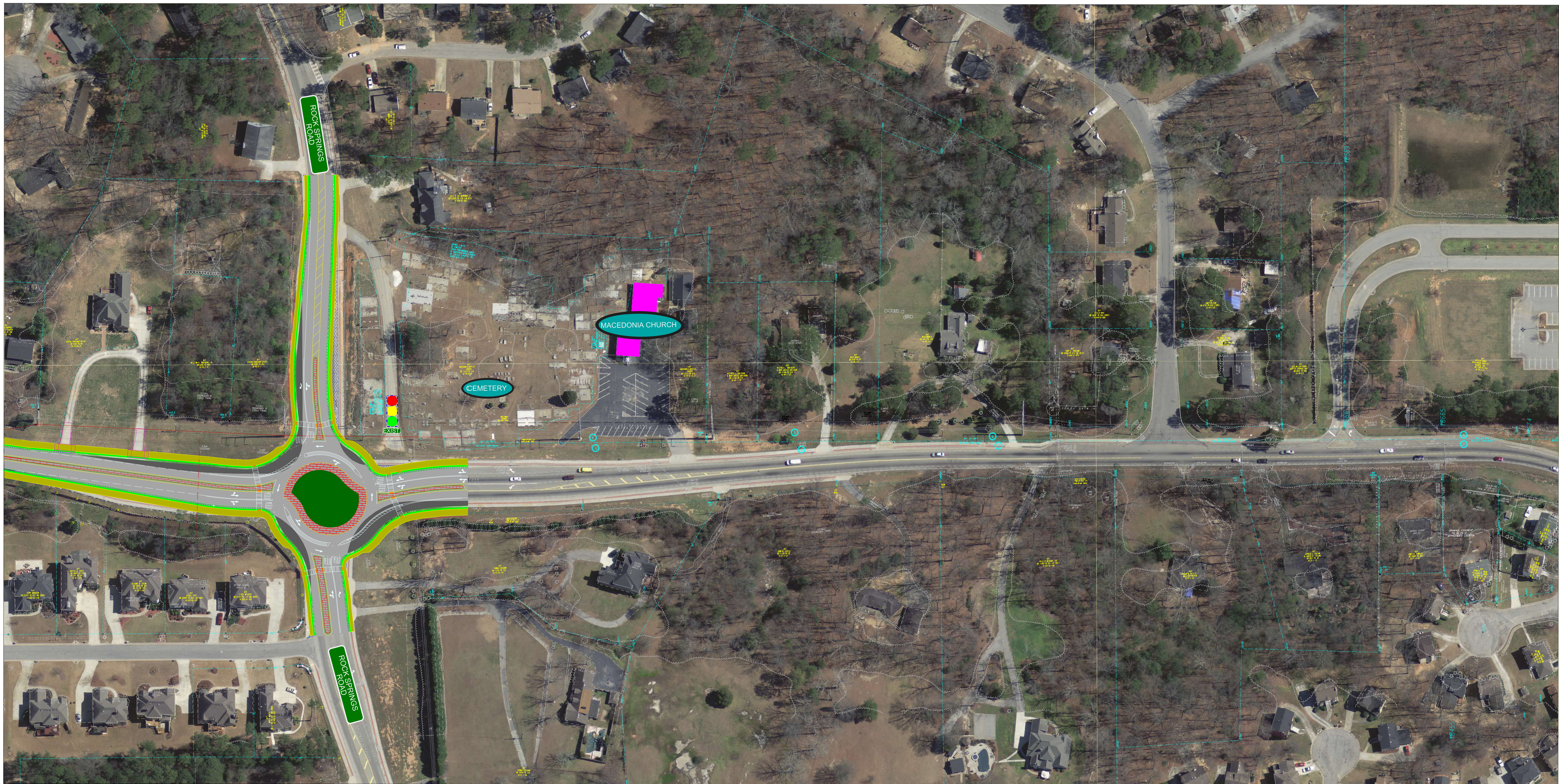


- EDGE OF PAVEMENT
- CURB AND GUTTER
- SIDE WALK
- EXISTING PAVEMENT
- DRIVEWAY
- TRANSMISSION LINE TOWER
- MEDIAN
- PROPOSED PAVEMENT
- CENTRAL ISLAND
- PAVEMENT REMOVAL
- COMMERCIAL BUILDINGS

## PANOLA ROAD

### PROJECT 3 & 4 ALTERNATIVE





|                   |                         |                      |
|-------------------|-------------------------|----------------------|
| EDGE OF PAVEMENT  | DRIVEWAY                | CENTRAL ISLAND       |
| CURB AND GUTTER   | TRANSMISSION LINE TOWER | PAVEMENT REMOVAL     |
| SIDE WALK         | MEDIAN                  | COMMERCIAL BUILDINGS |
| EXISTING PAVEMENT | PROPOSED PAVEMENT       |                      |

**PANOLA ROAD**  
PROJECT 3&4 ALTERNATIVE

